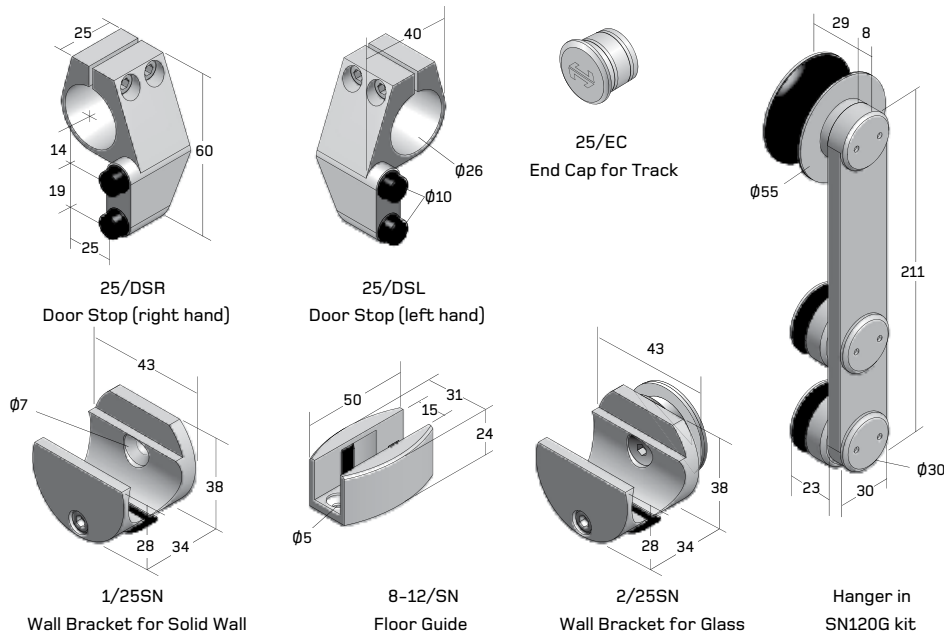


A photograph of a modern office interior featuring a glass partition system. A glass door is partially open, revealing a frosted glass panel. The door is held by a top-hung tubular sliding system with a horizontal track and rollers. The glass has a minimalist design with vertical metal strips and colorful horizontal bands (black, grey, blue, red, yellow) near the bottom. The background shows a brightly lit office space with a ceiling light fixture.

# Sienna SN120 – Tubular Sliding Door System Top Hung

The Sienna SN120 is an elegant frameless glass door system for internal applications that provide a minimalist look. The Sienna SN120 is designed for 8, 10 and 12mm TEMPAFLOAT® Toughened Safety Glass doors up to a maximum weight of 120kg. The maximum glass doors height is 2400mm and minimum width is 700mm.



### Key Features

- ▶ The top track is a 25mm diameter stainless steel tube which is fixed to the wall or glass side panels by a range of special stainless steel fixing.
- ▶ The hangers are stainless steel with nylon roller wheels and needle roller bearings and the floor guides are stainless steel with special adjustable nylon walls.
- ▶ The track stops are satin stainless steel with rubber bumper stops, while all stainless steel components are grade 304.
- ▶ Maximum Door width 2000mm. Minimum width is 700mm.
- ▶ Maximum Door height 2500mm.

### Material Finish

- ▶ Satin Stainless Steel.
- ▶ Powdercoated on request. Note: Powder coating is available in a wide range of colours with commercially available surface integrity warranties from 10 to 30 years.

### Typical Sienna SN120 set outs are:

- ▶ SN GW – Glass to Wall – single or double door.
- ▶ SN GG – Glass to Glass – single or double door with side panels and over panels.

### The system is glazed with Metro Performance Glass, as follows:

- ▶ Suits 8, 10 and 12mm TEMPAFLOAT® Toughened Safety Glass.
- ▶ Toughened Heat Soak Glass.
- ▶ Toughened Screen Print Glass.
- ▶ Toughened Digital Print Glass.
- ▶ Glass must have a minimum strength of 100MPa. All edges polished.

### Hardware

- ▶ Refer to your local Metro Frameless Glass Stockist for advice. Or see Section 6.

### Scope of Use

- ▶ The Sienna Sliding door is designed for glass doors up to a maximum weight of 120kg.
- ▶ The Sienna SN120 is an elegant frameless glass door system for internal applications that provide a minimalist look
- ▶ Two sets can be joined together for bi-parting door applications.

### Support Inquiries

- ▶ Metro Technical phone (09) 927 3000 or email [technical@metroglass.co.nz](mailto:technical@metroglass.co.nz)

## Sienna SN120





SUITABLE FOR INTERNAL ONLY. MAXIMUM Door weight 120kg.

Nominal Glass Thickness (mm)	MAXIMUM Door Heights Span (mm) for Wind Zones																	
	Internal 0.5kPa			Low 0.72 kPa			Medium 0.96 kPa			High 1.36 kPa			Very High 1.76 kPa			Extra High		
	H	W	Suits	H	W	Suits	H	W	Suits	H	W	Suits	H	W	Suits	H	W	Suits
8mm TEMPAFLOAT®	2500	2000	Yes			No			No			No			No			No
10mm TEMPAFLOAT®	2400	2000	Yes			No			No			No			No			No
12mm TEMPAFLOAT®	2000	2000	Yes			No			No			No			No			No

## SIENNA SN120 SLIDING DOOR SYSTEM

## Top Hung (Ceiling Mount)

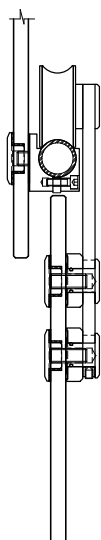


Product	Model	Sizes mm	Finish	Material	Type	Application	Area
<b>SIENNA SN120 SLIDING DOOR KIT</b>  <b>GLASS MOUNT SET</b> 	501140	1250mm Wide Door *Track 2500mm, 7 Glass Clamps	SS	STAINLESS STEEL	TOP HUNG  *Each Set includes (Track, Hangers, Mounting Brackets, Stops and Floor Guide)	SLIDING DOOR  *Glass Mount sets contain mount brackets to fix track to glass over light and side panels	Internal 
	501139	2000mm Wide Door *Track 4000mm, 7 Glass Clamps	SS				
		*Maximum Door Weight 120kg  GLASS THICKNESS: 10mm	ON REQUEST: POWDERCOAT				
<b>SIENNA SN120 SLIDING DOOR KIT</b>  <b>WALL MOUNT SET</b> 	501138	1250mm Wide Door *Track 2500mm, 5 Glass Clamps	SS	STAINLESS STEEL	TOP HUNG  *Each Set includes (Track, Hangers, Mounting Brackets, Stops and Floor Guide)	SLIDING DOOR	Internal 
	501137	1500mm Wide Door *Track 4000mm, 6 Glass Clamps	SS				
		*Maximum Door Weight 120kg  GLASS THICKNESS: 10mm	ON REQUEST: POWDERCOAT				

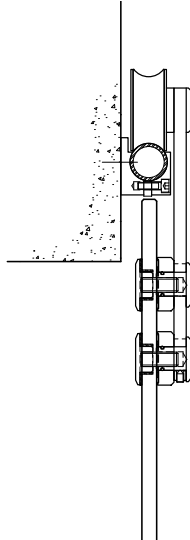
**NOTE:** If specifying 8mm or 12mm glass thickness please indicate this at time of order placement.

Two door sets can be joined for bi-parting door applications.

## Glass Mount





## Wall Mount



# SIENNA SN120 SLIDING DOOR SYSTEM



## Individual Components

Product	Model	Sizes mm	Finish	Material	Type	Application	Area
<b>SIENNA SN120 TRACK JOINER</b> 	301367	103 x 25mm	SS	304 STAINLESS STEEL	INLINE JOINER	SLIDING DOOR COMPONENT	Internal 

**ADDITIONAL: HANDLE SELECTION REQUIRED**

(Refer Handle selection table for additional options)

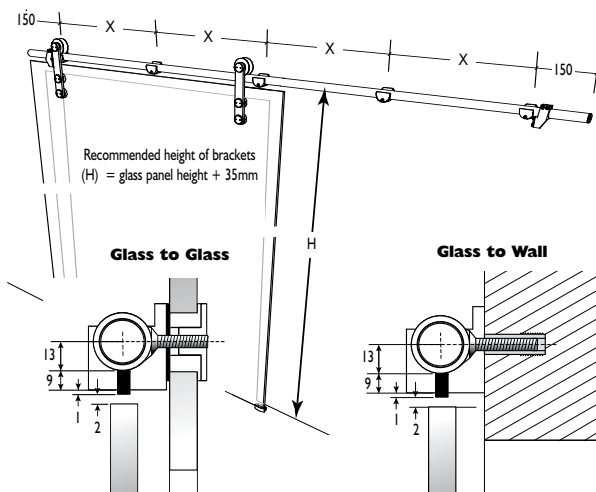
**NOTE:** Allowance must be made in the glass panel for cut out holes (Handle), minimum glazing clearances shall apply.

# FRAMELESS COMMERCIAL DOORS

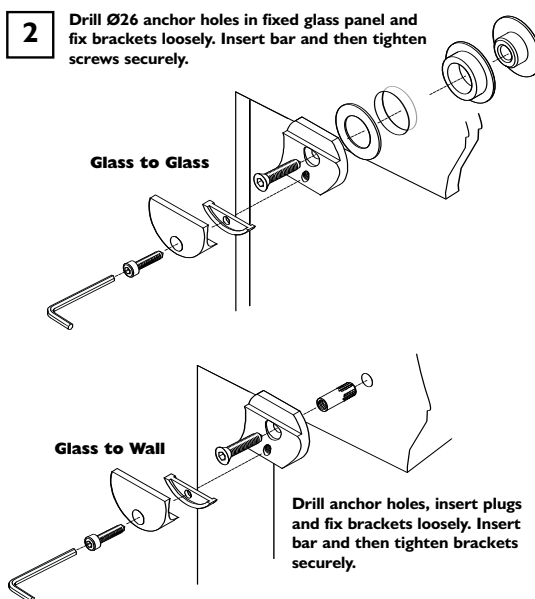
## Installation / Fitting Instructions

### Sienna (SN120)

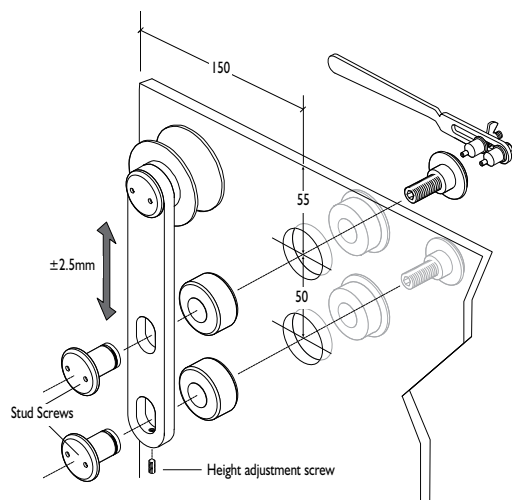
- 1** Mark position of brackets on the wall/glass ensuring that the correct number of brackets are used (see table).



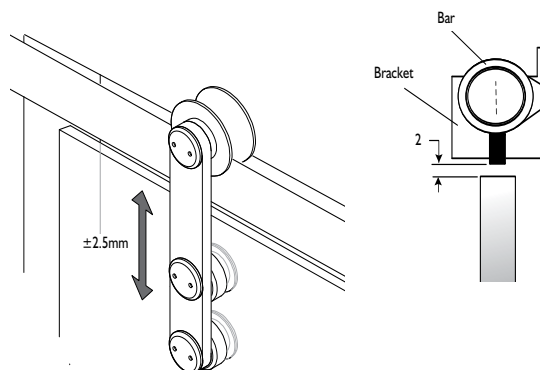
- 2** Drill Ø26 anchor holes in fixed glass panel and fix brackets loosely. Insert bar and then tighten screws securely.



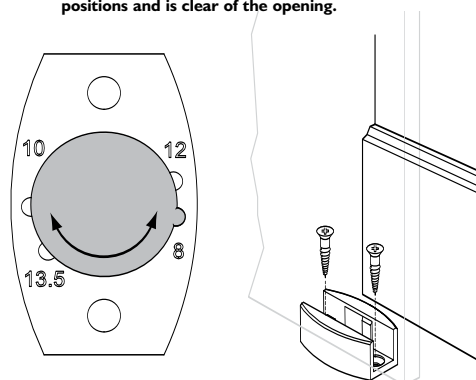
- 3** Unscrew the stud screws from the hanger and position the hanger on the door using the fitting tool provided.



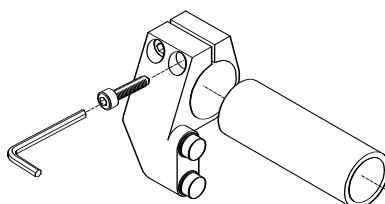
- 4** Hang the door on the track and adjust the alignment screw to ensure that the distance between the bottom of the bracket and top of the door is no greater than 2mm then tighten the stud screws.



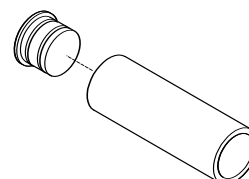
- 5** Adjust the floor guide to the correct glass thickness by removing the insert and rotating to the correct position. Secure to the floor using the fixings provided ensuring the door remains located in the floor guide at all positions and is clear of the opening.



- 6** Secure the floor stops using the 4mm Allen key. Tighten to torque setting 6Nm and test door.



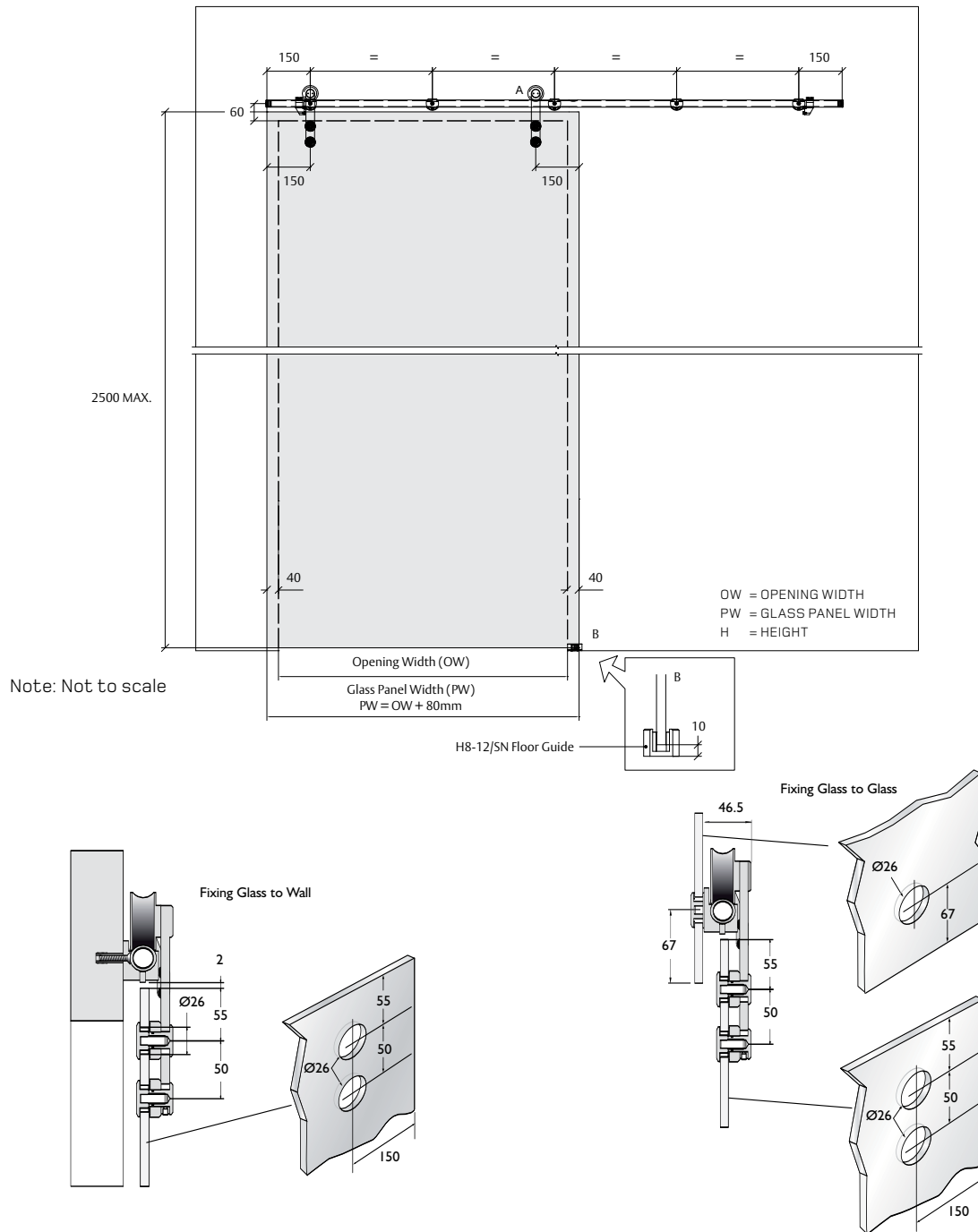
- 7** Insert end caps at each end of the tubular track.



# FRAMELESS COMMERCIAL DOORS

## Installation / Fitting Instructions

### Sienna (SN120)



MAXIMUM BRACKET SPACING (X) CALCULATION TABLE Panel Width

Height	up to 850			851-950			951-1050			1051-1150			1151-1250			1251-1350			1351-1400		
	Glass thickness			Glass thickness			Glass thickness			Glass thickness			Glass thickness			Glass thickness			Glass thickness		
	8	10	12	8	10	12	8	10	12	8	10	12	8	10	12	8	10	12	8	10	12
1900	400	400	400	450	450	450	500	500	500	550	550	530	600	550	520	590	550	510	580	540	510
2000	400	400	400	450	450	450	500	500	500	550	540	510	580	540	510	570	530	500	570	530	500
2100	400	400	400	450	450	450	500	500	500	550	530	500	570	530	500	560	520	490	560	520	490
2200	400	400	400	450	450	450	500	500	490	550	520	490	550	510	480	550	510	480	540	500	470
2300	400	400	400	450	450	450	500	500	480	550	510	480	540	500	470	540	500	470	530	490	460
2400	400	400	400	450	450	450	500	500	470	550	500	470	530	490	460	530	490	460	520	480	450
2500	400	400	400	450	450	450	500	490	460	550	490	460	520	480	450	520	480	450	510	470	440

For reference estimated glass weights are: 8mm = 20kg/m<sup>2</sup> - 10mm = 25kg/m<sup>2</sup> - 12mm = 30kg/m<sup>2</sup>