

BATHED IN BEAUTY

Create a truly unique bathroom with glass that conveys simplicity, clarity and design elegance



SHOWERS



METRO
PERFORMANCE GLASS



CLARITY.
BEAUTY.
SIMPLICITY.






Bathrooms have become a key 'feature' room in many of today's modern homes.

From architectural design statements and 'personal spas' to more simple, functional bathroom environments, nothing says style and elegance quite as well as the startling clarity and beauty of glass.

With clever design and the latest Clearvision high performance glass, you can create a bathroom that feels large, open and luxurious.

Create something truly distinctive with fully paneled glass feature walls, frameless showers, unique decorative glass partitions and feature mirrors. And our EzyClean Technology  makes cleaning simple, with only the use of water and a mild detergent or microfibre cloth needed.

The possibilities are limited only by your imagination.





- A** **Three sided walk in** – Features an opalescent panel to further maximise light from the bedroom, whilst still providing a level of privacy.
- B** **Three sided hinged door** – Hinged door showers are a 'classical' fully enclosed option.
- C** **Three sided sliding door** – Sliding doors maximise bathroom floor space whilst providing a fully screened shower enclosure.

THREE SIDED SPACE

Three sided showers generally feature in much larger bathrooms. Although perhaps less common, stand-alone four sided showers are nonetheless unique and very desirable.

Glass shower liners can be added as a simple primary colour, digitally printed to reflect nature (or anything else) or the effect of tiles with a grout-free surface. And there are three main options when designing your corner shower: a walk-in with no door, a hinged door or a sliding door.

For a walk-in shower it is necessary to have a distance of 1500mm from the shower head to the edge of the walk-in space to meet clause E3 of the Building Code.



TWO SIDED SPACE

Corner showers are one of the most popular styles of glass shower, and for good reason as they can fit into almost any given corner of a bathroom.

There are three main options to consider when designing your corner shower: a walk-in with no door, a simple corner with a hinged or sliding door, or a corner quadrant with an angled door. In smaller rooms we recommend the use of a sliding door to minimise the impact of the door opening into the room.

For a walk-in shower it is necessary to have a distance of 1500mm from the shower head to the edge of the walk-in space to meet clause E3 of the Building Code.



- A** **Corner shower hinged door** – A simple and elegant solution to a bathroom with limited space.
- B** **Corner shower hinged door** – A clever use of space featuring the extension of a small alcove to create a large shower area.
- C** **Corner shower hinged door** – With ColourBak Anthracite Grey glass shower lining for an extra personalised touch.
- D** **Corner walk in shower** – Full height screens for quick installation and to aid ventilation control, plus a full height ColourBak Anthracite Grey glass lining as a feature wall.



TWO SIDED SPACE

A corner quadrant shower design (normally with a hinged door) is ideal for maximising the floor space in a bathroom. And, when full height shower screens are used in conjunction with extraction or ventilation systems, it can largely control the steam generated on cool winter mornings.

As with other shower options, glass liners and splashbacks can be used to create reflection and colour to give a bathroom a modern and contemporary feel. Glass liners can vary from simple plain colours to digitally printed glass featuring any image you choose.



- E** **Corner shower hinged door** – Shower fitted into area with a sloping ceiling to utilise and take advantage of any given space.
- F** **Corner quadrant shower hinged door**– Maximises the shower enclosure while limiting the amount of floor space used. ColourBak Anthracite Grey glass shower lining.
- G** **Corner shower sliding door** – A sliding door removes the floor space impact of a hinged door. ColourBak Anthracite Grey glass shower lining.







A



B



C

INLINE SPACE

Alcove showers are designed to fit into an alcove space. Glass wall liners can be used to create reflection and colour. These liners can be a simple plain colour, digitally printed to reflect nature, or even the effect of tiles (but with a grout free surface.)

For a walk-in shower in an alcove, it is necessary to have a distance of 1500mm from the shower head to the edge of the walk-in space. For smaller rooms Metro recommend the use of a sliding door to minimise the impact of the door opening into the room.

And full height shower screens, linked to extraction or ventilation systems, are often used to control steam generated by hot water in colder months.

- A** **Inline walk in shower** – with full height screen to channel steam.
- B** **Inline hinged door** – For a more traditional appearance and feel.
- C** **Inline sliding door** – Designed to maximise the usable floor space.
- D** **Inline hinged door** – 3m high doors for rooms with high studs (as shown on the cover of this brochure).
- E** **Inline hinged door** – An ideal use for a small alcove.



D



E



INLINE SPACE & BATH SCREENS

From hinged doors, sliding doors and single glass panels, the same shower logic can be applied to your bath. Remove the unsightly and often less-than-waterproof shower and bath curtains, for a more contemporary (and practical) look.

- A** **Inline sliding door** – A thoughtful way to integrate a shower into a sloped ceiling space.
- B** **Inline hinged door** – 2.4m high.
- C** **Inline walk in** – With a sleek, minimalistic 1.5m long Clearvision glass panel, reflected in the bathroom mirror (as shown on pages 16-18).
- D** **Inline hinged bath screen** – A versatile use of space.
- E** **Inline hinged bath screen** – A user-friendly alternative to shower curtains.
- F** **Inline single panel bath screen** – The humble shower curtain, re-imagined.

Note sliding doors may also be used on baths with adequate edge lip to support the door guide



CHOOSE YOUR GLASS

Metro use the very best toughened glass manufactured in our six toughening facilities nationally. Along with a range of different glass types, there is the option of having Metro EzyClean Technology applied to your shower (no extra visit to your home after the shower is installed).

For white and ‘crisp’ coloured bathrooms, Metro recommend the use of Clearvision glass, for an ultra clear look. It avoids the ‘green effect’ and keeps your glass a whiter shade of white.



Glass Type

	All Showers	Screens Only		
	10mm Toughened Safety Glass	12mm Toughened Safety Glass	15mm Toughened Safety Glass	19mm Toughened Safety Glass
Standard Clear	●	●	●	●
Clearvision	●	●	●	
Grey Tint		●		
Bronze Tint	●			
Green Tint	●			
Dark Green Tint (Panasap)	●			
White Frost (Etchlite to Outside)	●	●		

EzyClean[®] Technology

SAVE TIME AND REPEL DIRT, SOAP AND GRIME WITH METRO EZYCLEAN TECHNOLOGY

Applied in our state-of-the-art manufacturing facilities, Metro’s unique EzyClean Technology [®] provides a protective coating that creates a long lasting, invisible shield on your homes glass surface.



Untreated

Metro EzyClean [®]

Water will simply bead off the glass surface, resulting in cleaning time being significantly reduced. And it also makes cleaning simple, only requiring the use of water and a mild detergent or microfibre cloth.

Compared to ordinary glass, Metro EzyClean Technology [®] :


- + resists staining from hard water deposits
- + does not support the growth of bacteria
- + eliminates the need for harsh and abrasive cleaning products
- + protects against the build-up of soap scum, body oils, dirt, and grime

So whilst glass protected with EzyClean Technology saves time and effort, it also stays cleaner longer, creating a more hygienic environment.

Simple maintenance: A soft cloth is all you really need to clean your protected glass, but for best results, squeegee dry after each use. The only cleaning solution Metro recommends using is warm water and mild detergent.

Warranty: Provided the glass is maintained according to published after-care instructions and without the use of abrasive cleaning methods or highly alkaline products, Metro Performance Glass warrants that Metro EzyClean Technology will work for up to ten (10) years from the date of manufacture.

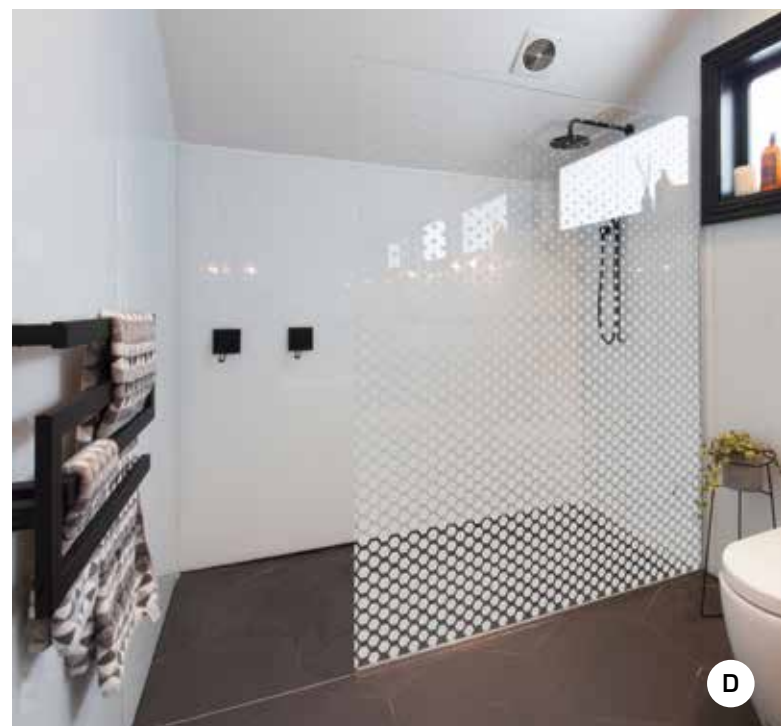
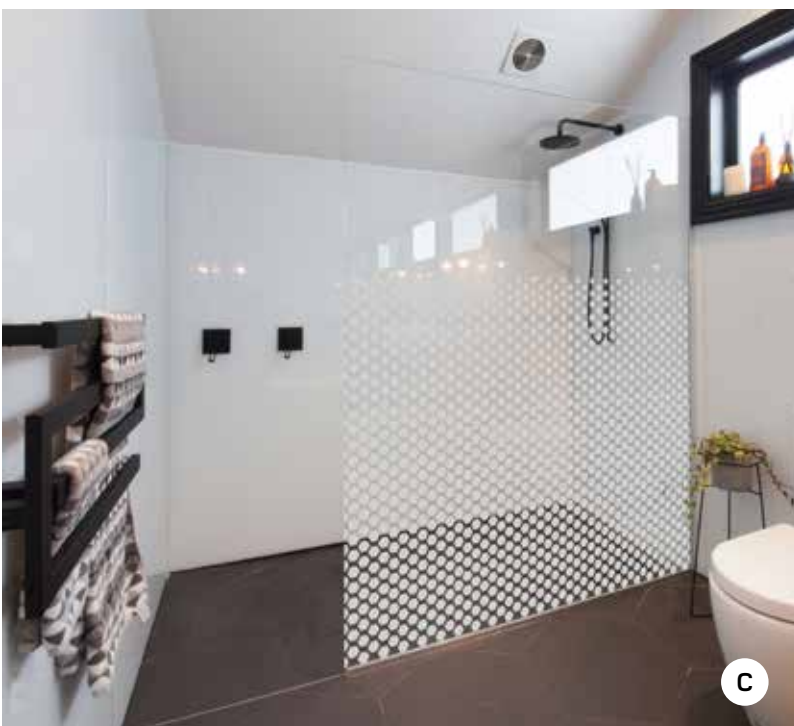
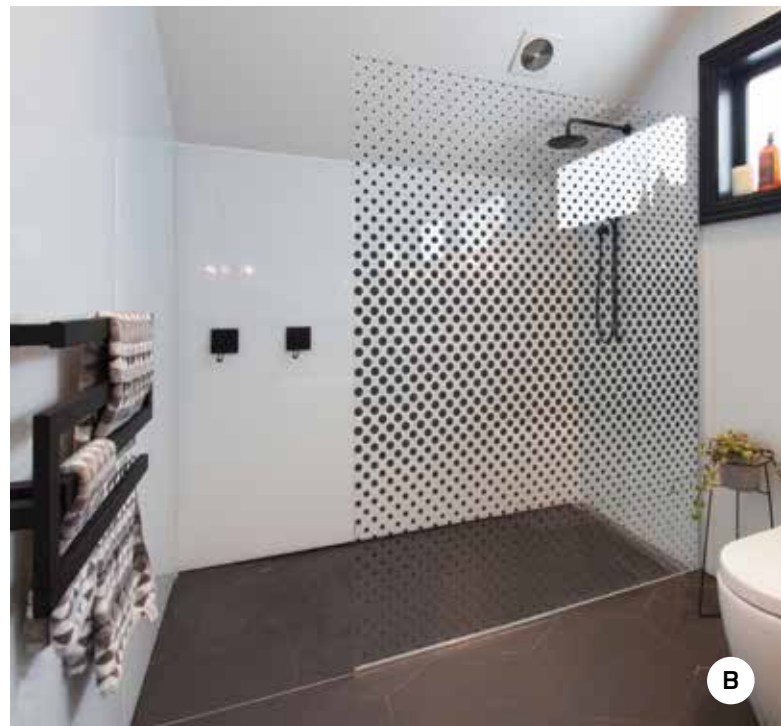
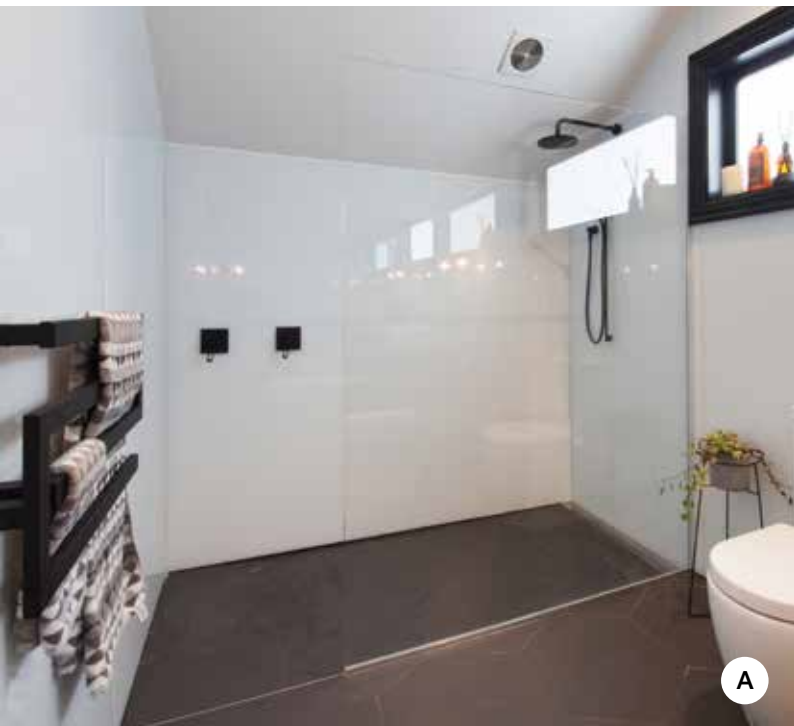


 When you see this symbol you know EzyClean Technology has been applied to the glass.

DECORATIVE GLASS SHOWER SCREENS

Add a touch of personalisation or privacy with a ceramic digital printed shower screen. Let your creativity run free. Talk to your Metro Performance Glass seller for further details.

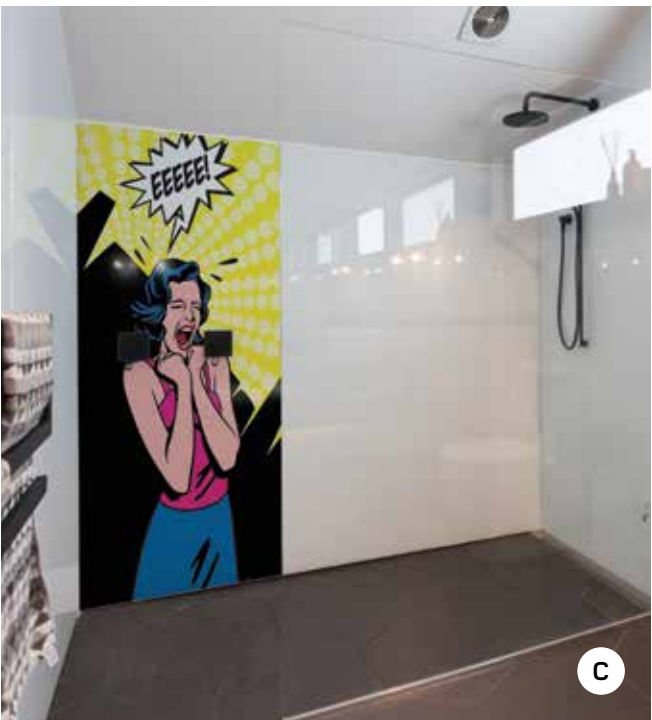
- A** **Walk in shower** – with Clearvision shower screen and cool white glass shower linings.
- B** **Walk in shower** – The same shower as 'A' with a graduated circular modesty panel screen on Clearvision glass.
- C** **Walk in shower** – Graduated Hexagonal pattern for child safety at floor level on Clearvision glass.
- D** **Walk in shower** – Graduated Hexagonal pattern to the full height of the screen providing modesty screening whilst still letting light into the shower enclosure.



DECORATIVE GLASS LININGS

Add some zing to your bathroom with decorative glass. Choose between ColourBak glass shower liners or digitally printed patterns or pictures, on an easy to clean flat surface. Once measured you will be surprised how quick installation can be. Mix and match colours and prints to provide a lift to any bathroom.

- A** Inline walk in – with ColourBak cool white walls lining the whole bathroom.
- B** ColourBak Fern Green Shower lining.
- C** Decorative glass linings – The same shower showing a highlight panel, choose from one of these designs or choose your own digital file for printing. Talk to Metro Performance Glass for further details.



Express Range

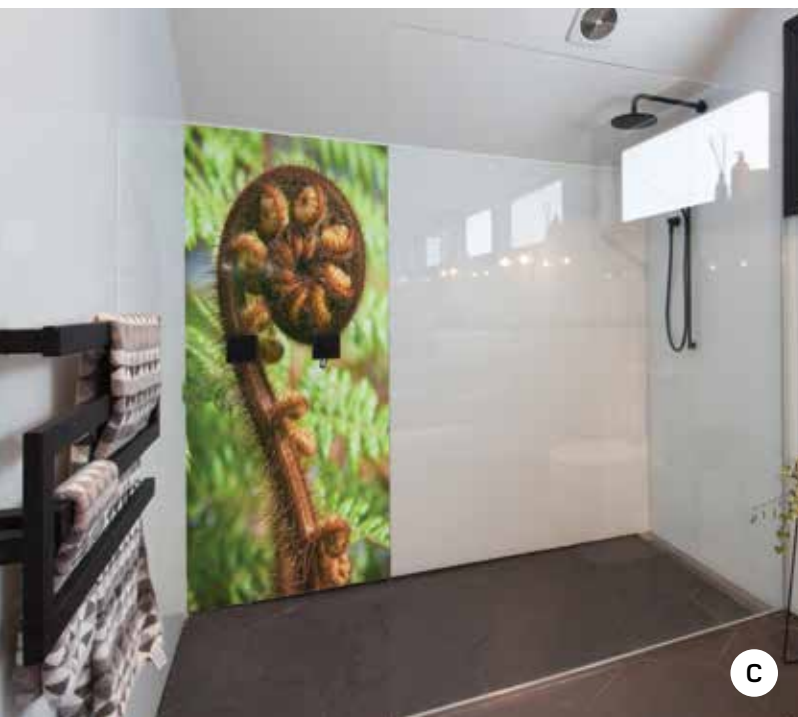
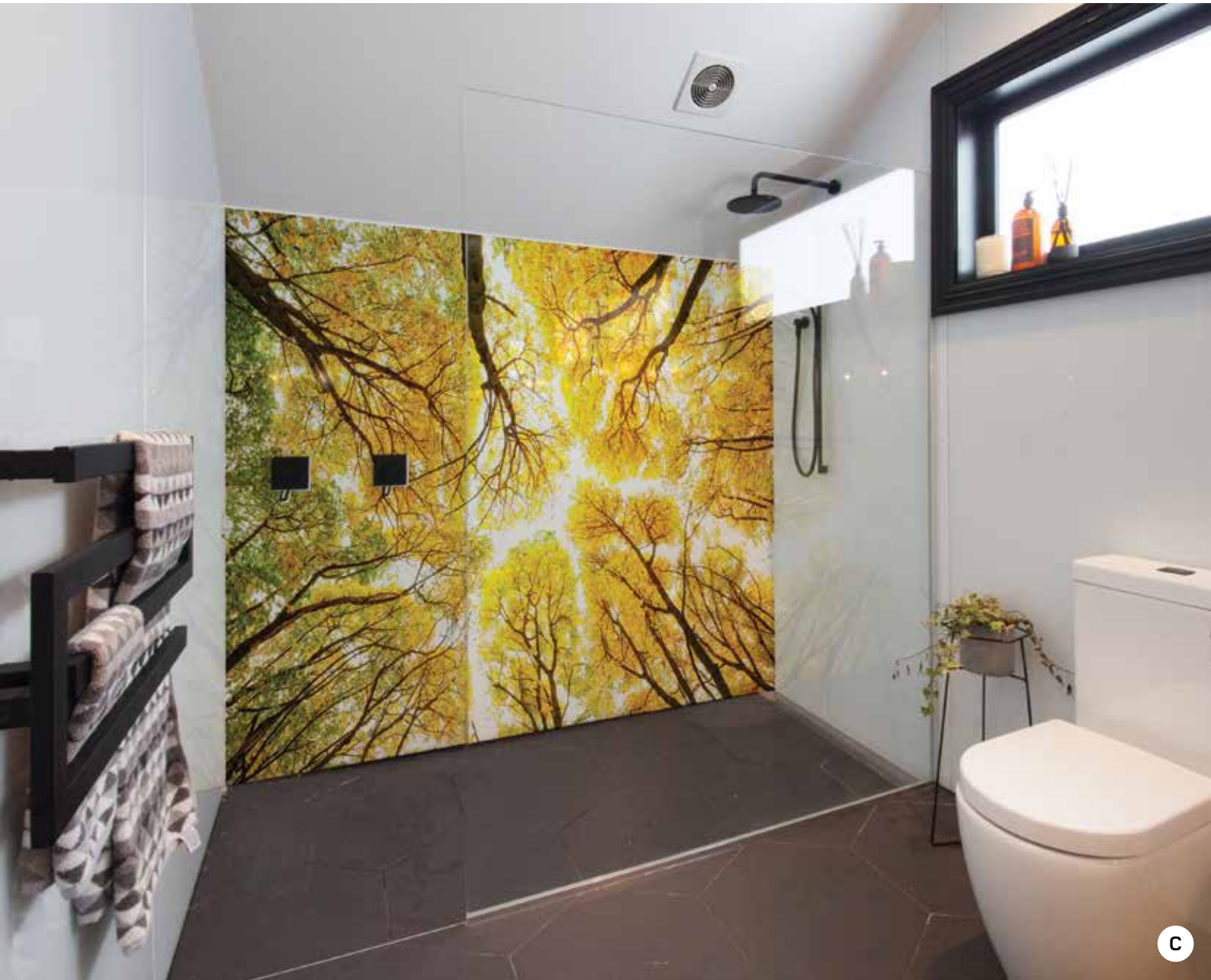
Pacific Blue	Deep Black	Teal Green	Sky Blue
Anthracite Grey	Cool White	Fern Green	Oyster White

Standard Range

Black White	Alabaster	Red Berry	Iron Sand
Tea	Soft Cream	Lime Green	Burnt Orange
Earthy Brown	Light Blue	Ocean Green	Silver Metallic
White Metallic	Bronze Metallic	Blue Metallic	Black Metallic

The Express Range and Standard Range are available on 6mm Clear or Clearvision glass.

Colour reproduction is as accurate as current printing methods allow. Please refer to ColourBak glass samples before making your choice. For metallic colours please refer to glass samples.





CHOOSE YOUR HARDWARE

Metro offers a range of hardware from large D handles through to small pull handles, and even the option of cut-outs. When using cut-outs for extra safety Metro recommend only using on hinged doors.



- A** H Square Handle – featured on sliding door.
- B** Oblong cut-out – 100mm.
- C** Round cut-out – 50mm.

Hardware Options

Images below are shown in satin.



QUADRO XL
Pull Handle
250MM



DOUBLE D
Pull Handle
250MM



H SQUARE
Pull Handle
250MM



H ROUND XL
Pull Handle
250MM



H ROUND S
Pull Handle
150MM



MD250
Pull Handle
250MM



WAVE
Pull Handle
210MM



MKS25
Knob
25MM



MK25
Knob
25MM



MK38
Knob
38MM



MK60
Knob
60MM

Colour Options



Polished
Stainless Steel



Satin
Stainless Steel



Powder
Coated White



Powder
Coated Black

Pull Handles	Quadro XL	●	●	●	●
	DOUBLE D	●	●	●	●
	H SQUARE	●	●	●	●
	H ROUND XL	●	●	●	●
	H ROUND S	●	●	●	●
	MD250	●	●	●	●
	Wave	●	●	●	●
Knobs	MKS25	●	●	●	●
	MK25	●	●	●	●
	MK38	●	●	●	●
	MK60	●	●	●	●

Standard Hardware: Polished or Satin Stainless Steel. **Upgrade Hardware:** Powder coated any colour (Gloss or Matt). Other options are available by request.

www.metroglass.co.nz

0800 545 800

V2 May 2016



METRO
PERFORMANCE GLASS